



Import of parts data and macros in EPLAN Electric P8

PROCESS CONSULTING

ENGINEERING SOFTWARE

IMPLEMENTATION

GLOBAL SUPPORT

EPLAN ENGINEERING CZ, s.r.o., IČ: 28886381, DIČ: CZ28886381

UniCredit Bank Liberec, číslo účtu: 2104167293/2700, SWIFT/BIC: BACXCZPP, IBAN: CZ3027000000002104167293

Firma je zapsaná do obchodního rejstříku vedeného Krajským soudem v Ústí nad Labem, oddíl C, vložka 27959, jednatel: Petr Pospíšil

FRIEDHELM LOH GROUP

Table of contents

1 EDZ format data Import 3

2 XML format data Import 4

3 Import of the macros 8

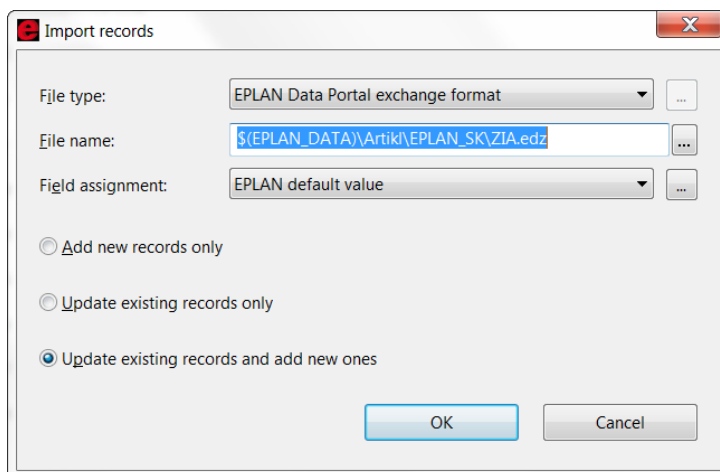
4 Import of the pictures 8

1 EDZ format data import

The *.edz file offers all the necessary article data, including macros, pictures and the documents in addition to the database entry data. The files are imported into standard related EPLAN folders in one step. So, the EDZ import is the most complex and easy.

The EDZ import procedure

Run the Parts management by using menu „Utilities / Parts / Management“. In **[Extras]** button and menu „Settings“, choose the parts database for importing files from EDZ package. The import can be started by using **[Extras]** button and menu „Import“. The next dialog will be shown:



Here is necessary to set the file type to „**EPLAN Data Portal exchange format (EDZ)**“ and then choose the file name you want to import. For searching the EDZ file click on [...] in file name field.

WARNING:

It is necessary to have configured the access and user account to EPLAN Data Portal otherwise the EDZ import function will not be activated.

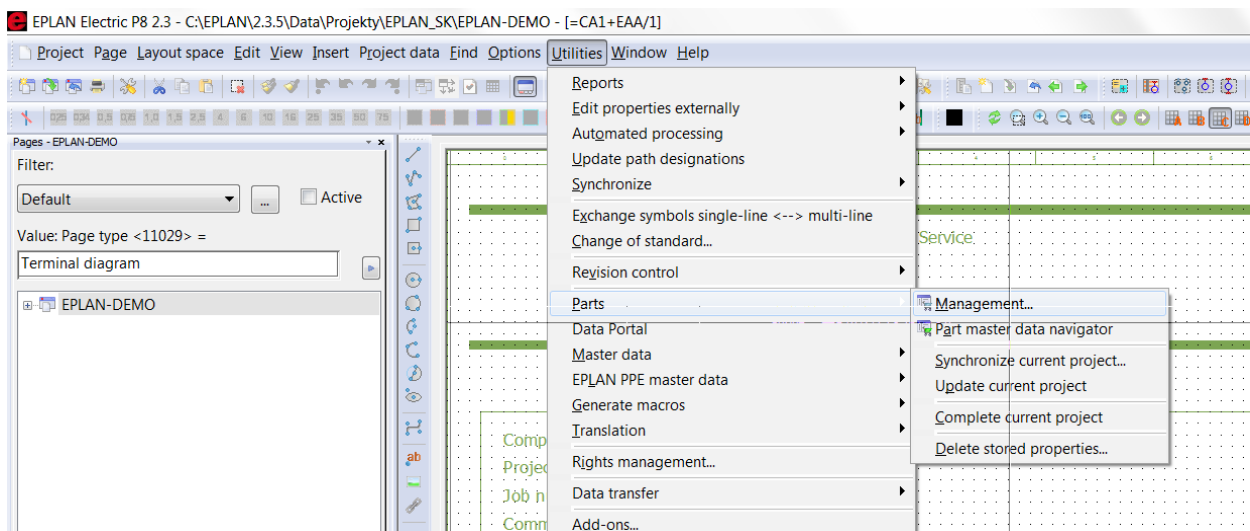
2 XML format data import

The file in *.xml format offers the parts data entries stored in database only. The parts database can be managed in MS Access or MS SQL Server software.

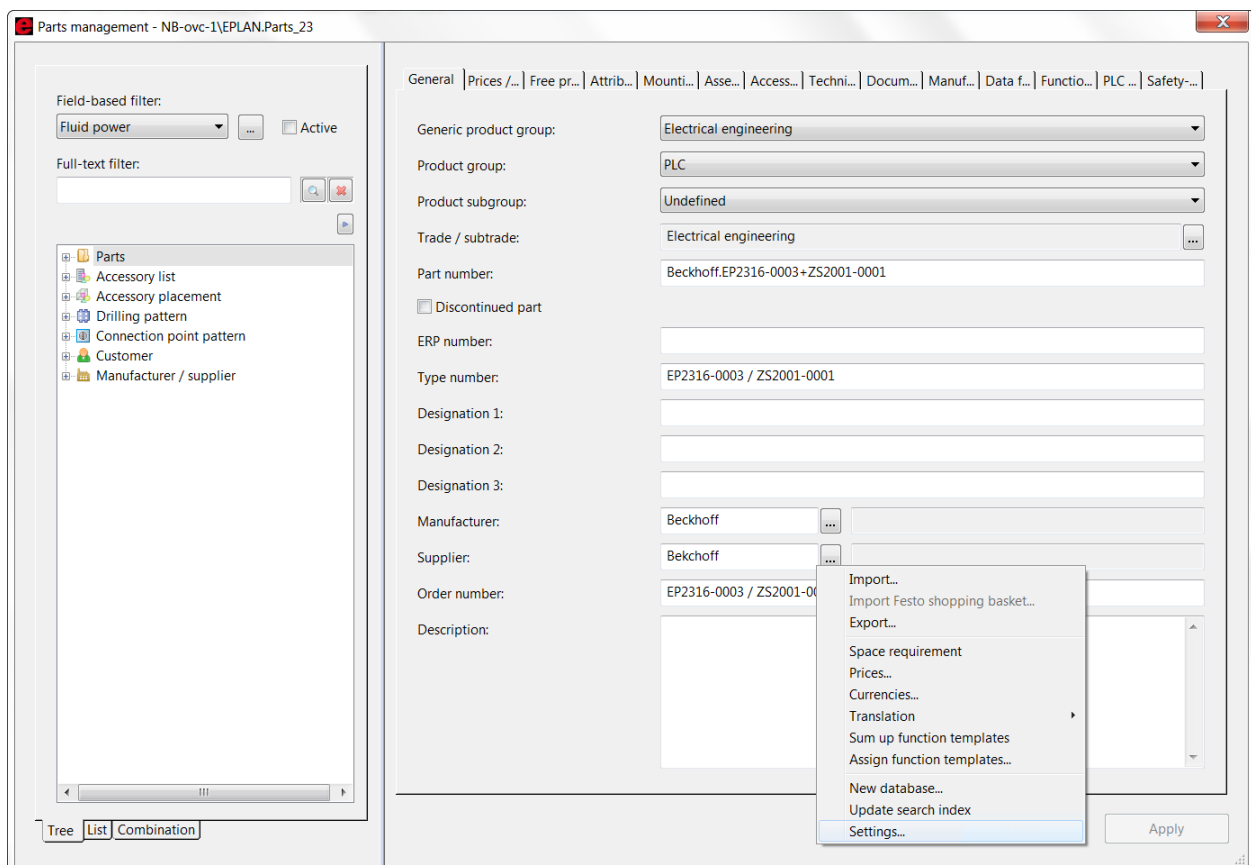
The cross-reference data of the part, such as macros, pictures and documents, is necessary to import in extra steps, explained in the next chapters.

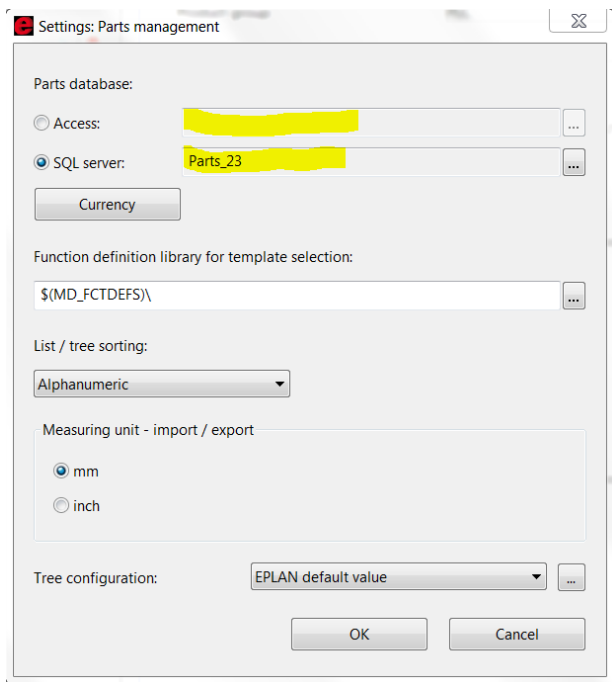
The XML import procedure

Run the Parts management using menu „Utilities / Parts / Management“.

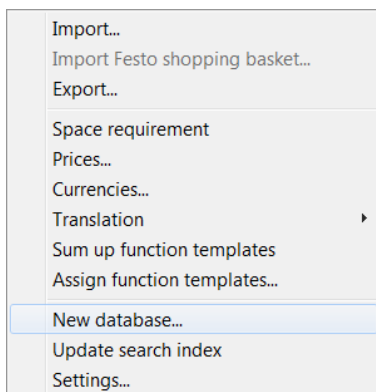


In [Extras] button and menu „Settings“, choose the parts database for importing XML files.

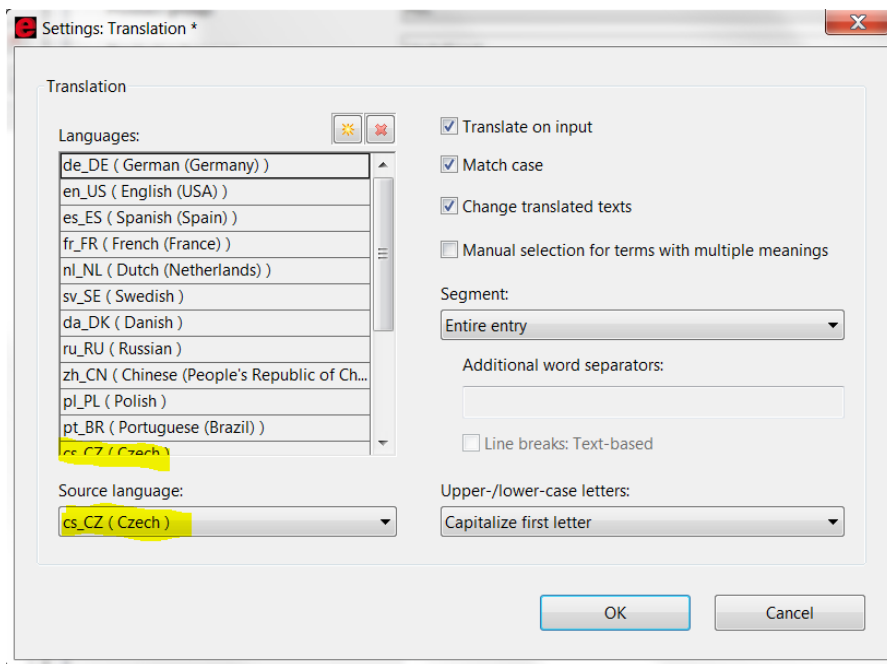




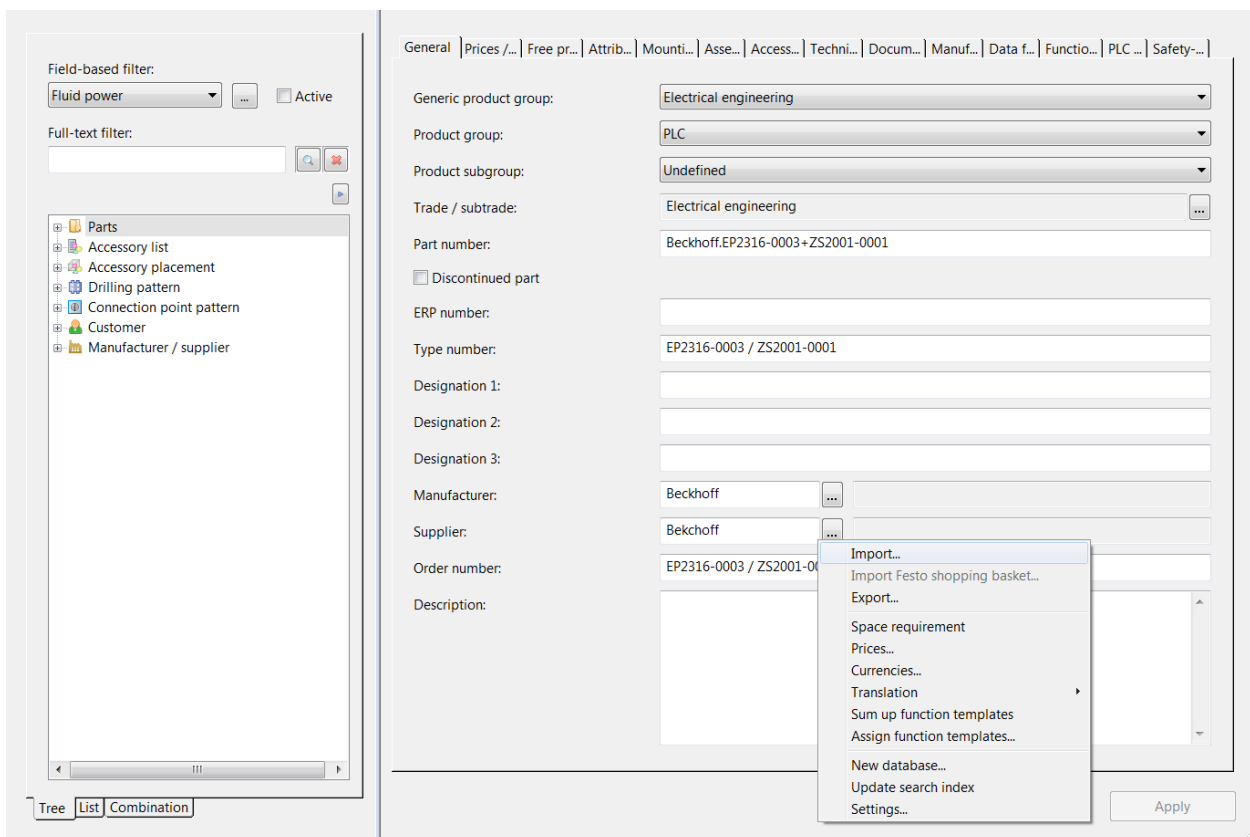
To create a new parts database, chose **[Extras]** button and click on menu “New database”.



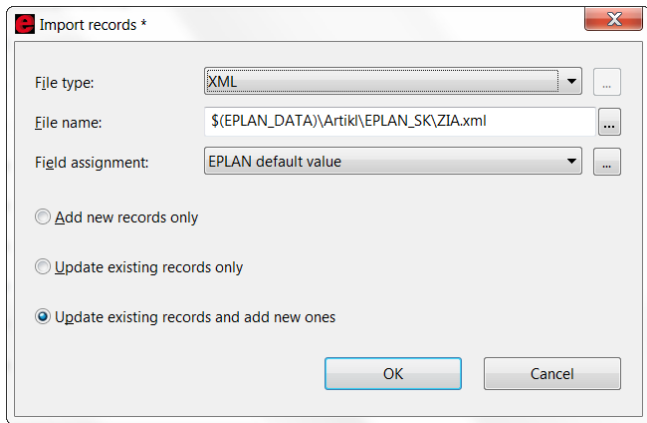
It is important to set the source language for the parts database to Czech. To do so, use the menu **[Extras]** / Translation / Settings. The Czech language must be included in the “Languages” table above. Then is possible to set the Source language to “Czech”.



The import can be started by using **[Extras]** button and menu „Import“.



The next dialog will be shown:

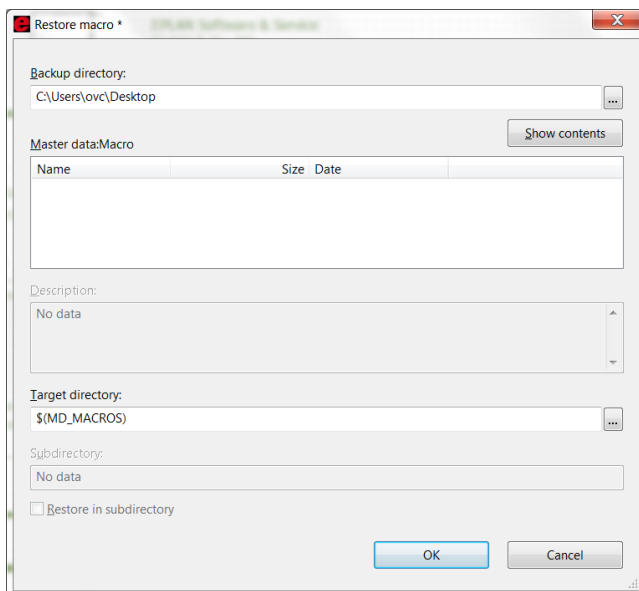


Here is necessary to set the file type to “**XML**” and then choose the name of XML file you want to import. For searching the XML file click on [...] in file name field. The import will start by clicking on **[OK]** button.

3 Import of the macros

The macros are included in the file type *.zw5. To import the macros use the menu “Project / Restore / Macro ...”.

In the shown dialog choose the folder where the *.zw5 file is stored. For searching the file use the button [...].



4 Import of the images

The file *_obrazky.zip unzip into the “Images” folder, which is set as the standard folder in EPLAN settings.

The settings of the EPLAN standard folders are available using menu “Options / Settings / User / Management / Directories”.

5 Import of the documents

The file **_dokumenty.zip* unzip into the “Documents” folder, which is set as the standard folder in EPLAN settings.

The settings of the EPLAN standard folders are available using menu “Options / Settings / User / Management / Directories”.

